

# Pedestrian Safety Road Kit Instructions

This document was produced by the City of Hillsboro Public Works Department as part of a grant from the Oregon Transportation Safety Program.



[Type here]

**These instructions were developed by the Hillsboro Safe Routes to School funded through the Safe Routes to School**

**Materials for each kit**

<b>Item</b>	<b>Amount</b>
4 mil. Black Plastic Sheeting	1 – 25x5 piece 3 – 10x5 piece 1 – 15x5 piece 1 – 2x3 piece 2 – 5x2 piece
White Duct Tape	300 feet
Yellow Duct Tape	67 feet
Black Duct Tape	
Grip Liner	7 – 4 feet long pieces, either 12 or 18 inches wide
Copy of curriculum	1
Laminated teaching aids	1
Pedestrian and Driver signs	4 of each with shoelace necklace

[Type here]

## T intersection

Item	Amount
4 mil. Black Plastic Sheeting	1 – 25x5 piece 2 – 10x5 piece
White Duct Tape	
Yellow Duct Tape	
Black Duct Tape	
Grip Liner	4 pieces

- Lay out 25 foot section.
- Place 10 foot sections so that they are at the mid-point of the 25 foot section and make a t-shape. Attach on the front and back of the sheeting with black duct tape.
- Place white tape along the “shoulders” of the “road” and at the “stop line”
- Place yellow tape pieces along the “centerline”
- Attach driveway “mid-block” and put white tape to show flare of the “driveway”
- 
- Attach grip liner piece at the end of each arm of the “road”

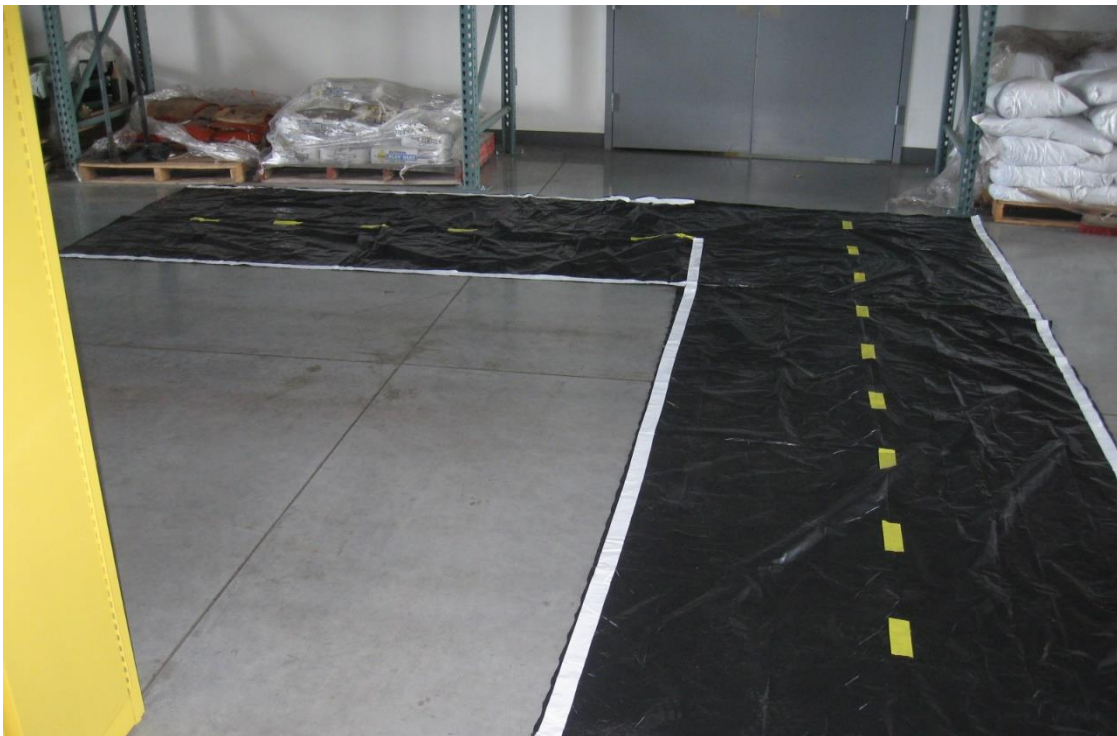


[Type here]

## L intersection

Item	Amount
4 mil. Black Plastic Sheeting	1 – 15x5 piece 1 – 10x5 piece
White Duct Tape	
Yellow Duct Tape	
Black Duct Tape	
Grip Liner	3 pieces

- Lay out 15 foot section.
- Place 10 foot section so that they are at the end of the 15 foot section and make a L shape. Attach on the front and back of the sheeting with black duct tape.
- Use white tape to make the “fog line” along the “shoulders” of the “road” and at the “stop line”. Do not place the fog line across any intersection.
- Place yellow tape pieces along the “centerline”
- Attach grip liner piece at the end of each arm of the “road” and at the corner of the L.



[Type here]

## Crosswalks (make 2)

Item	Amount
4 mil. Black Plastic Sheeting	1 – 5x2 piece
White Duct Tape	

- Use the white tape to make one side of the crosswalk a standard crosswalk and the other side a high visibility crosswalk.



[Type here]

## Other Items

Item	Amount
Driver and pedestrian signs	4 of each
Teaching aids	1 set
Curriculum	1 copy



[Type here]