



Oregon Safe Routes to School Network

*Creating safe, healthy,
convenient, and fun
opportunities for children to
use active transportation for
the school commute.*



SRTS Network Vision & Mission

Vision Statement

The Safe Routes to School Network and Leadership Committee aim to create a future where all students and families can safely use active and shared transportation options for the school



Mission Statement

The Safe Routes to School Network and Leadership Committee support schools and communities throughout Oregon in order to increase the number of youth using active and shared transportation options for the school commute.



Guiding Principles

- ☆ Equitable, diverse and inclusive
- ☆ Collaborative
- ☆ Creates culture change
- ☆ Promotes and fosters successful practices & programs



Oregon SRTS Leadership Committee Priorities



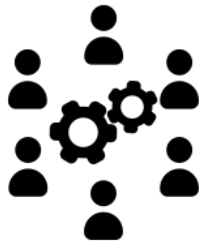
Convene Network members throughout the year

Advocate for Safe Routes to School programs



Diversify Leadership and Advisory Committees

Create new structure for Network collaboration




Collaborate with other groups and build partnerships

Embracing Equity in Safe Routes to School Programs

What Does Serving All Members of All Oregon Communities Look Like?



Children Killed While Walking

African American		2x as likely
Latino		40% more likely
White		

Dangerous by Design, 2011

© 2015 Safe Routes to School National Partnership

Diversity Equity & Inclusion in ORSRTS

- We started with a question
- We continue to lead with curiosity and an eye for discovery
- How we arrived here
- What you can expect as we continue to make progress
- What we need from leaders, volunteers and practitioners

WORLD CAFÉ PREVIEW

Diversity, Equity
& Inclusion
in your SRTS
Program



2018 Annual Report

OREGON SAFE ROUTES TO SCHOOL ANNUAL SNAPSHOT REPORT

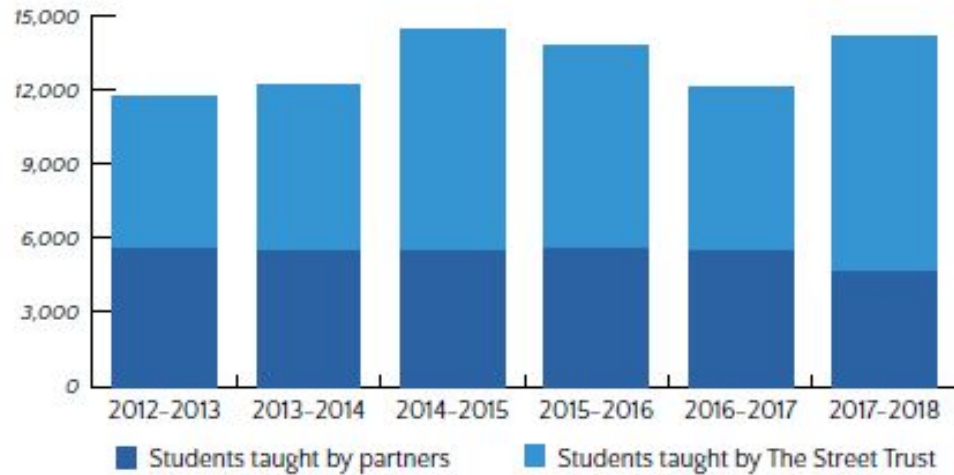


PREPARED BY
The Oregon Safe Routes to School
Network Leadership Committee

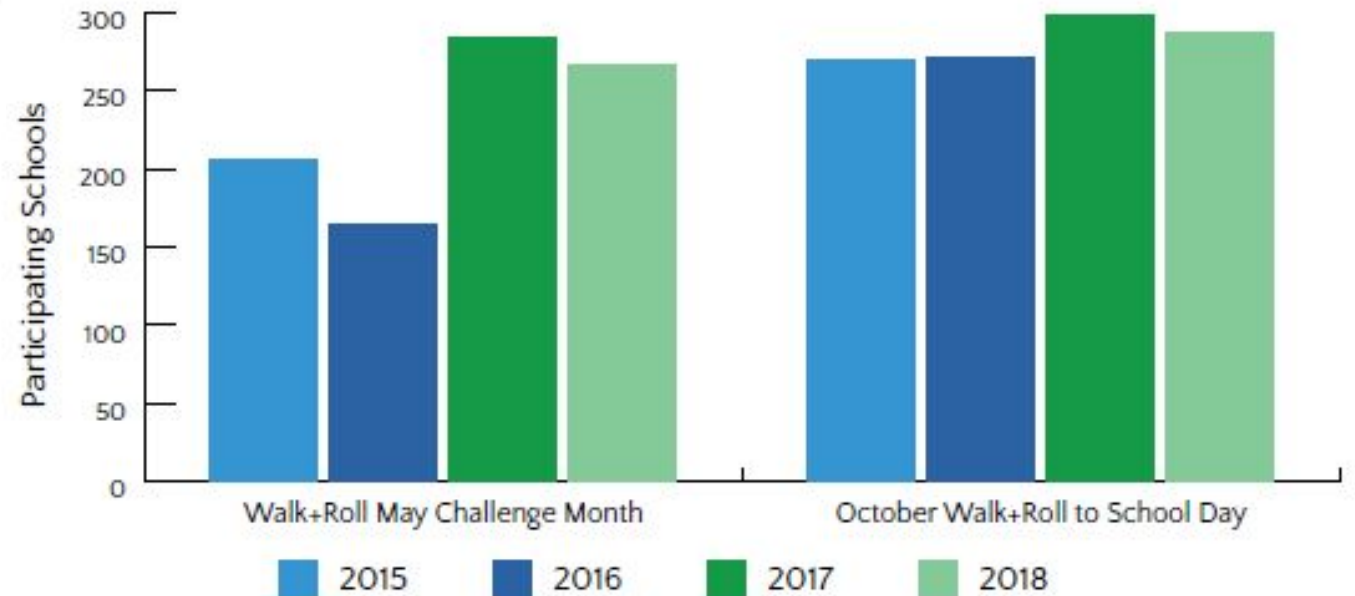


Education & Encouragement Updates

PEDESTRIAN AND BICYCLE SAFETY EDUCATION



WALK+ROLL TO SCHOOL DAY AND MONTH CHALLENGE



Success Stories



Transit safety education in Bend



A Rock and Roll Walk and Roll Day in Hillsboro



World Cafe



Oregon's Statewide SRTS Program



Oregon Department of Transportation SRTS Program

Non-Infrastructure SRTS Program Manager: Heidi Manlove

Infrastructure SRTS Program: LeeAnne Fergason

SAFE ROUTES TO SCHOOL PROGRAM UPDATES

One year!

New Partnerships!

Prioritizing transparency
and outreach

One ODOT



OVERVIEW OF FUNDING: INFRASTRUCTURE

House Bill 2017

Annual Allocation

3 programs

Competitive Grants recap

Upcoming opportunities



OVERVIEW OF FUNDING: NON-INFRASTRUCTURE



Funding Increase

Upcoming 3 year cycle

Local Competitive Grants

Statewide Work

Applications- April 15-May 31

Education, Encouragement, Enforcement

We are a **SafeRoutes** School!



Oregon Safe Routes To School



oregonsaferoutes.org/get-recognized/

Statewide Walking & Rolling Safety Curriculum



Action Plan Update

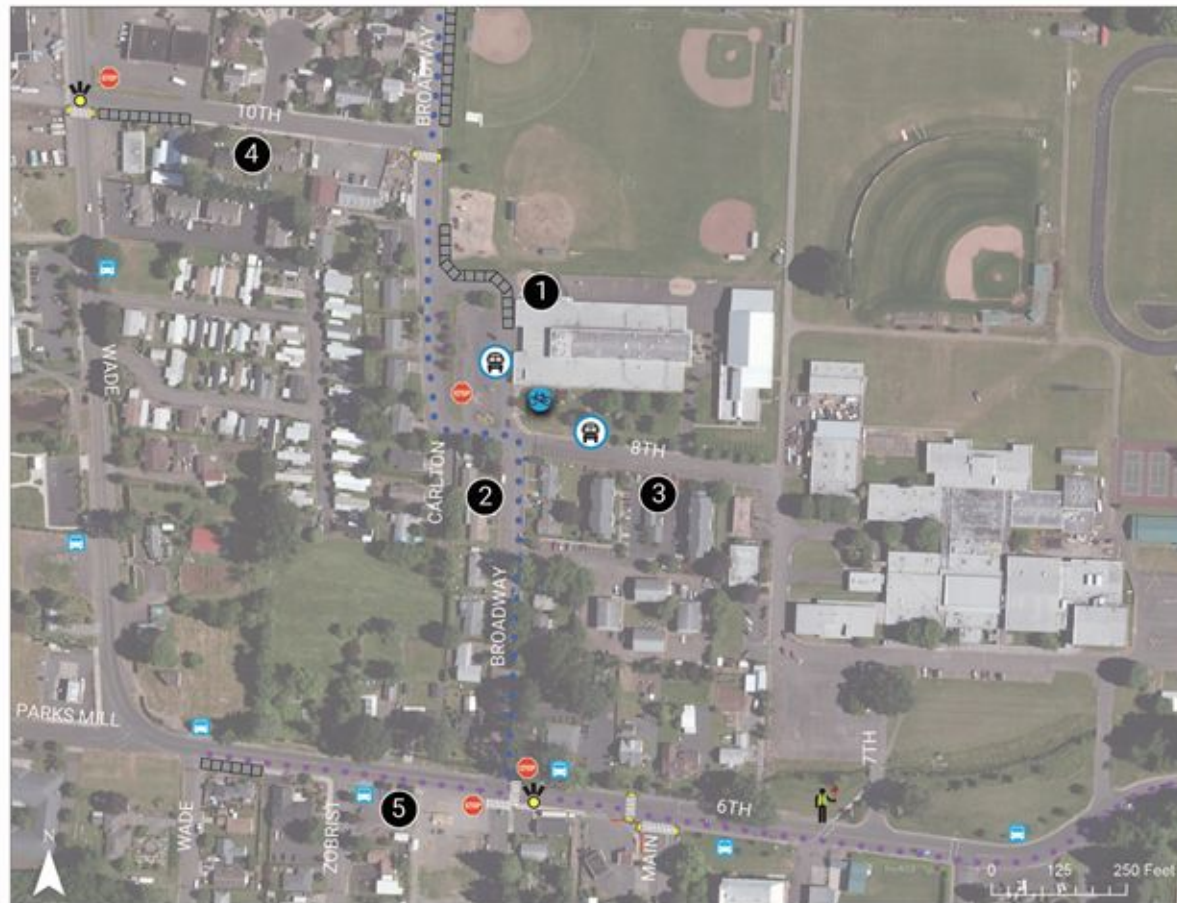
Infrastructure &
Non-Infrastructure
Evaluation



Case Study Evaluation



SRTS Plan



Legend

	Crossing Guard		Proposed Neighborhood Greenway		Proposed Reduced Curb Radius		Proposed Stop Sign
	Bike Parking		Proposed Sidewalk		Proposed Protected Bike Facilities		
	School Bus Loading		Proposed Flashing Beacon		Proposed Crosswalk		
	City Bus Stop		Proposed ADA-Compliant Curb				



River Mill Elementary School

Improvement Recommendations



- 1 School Parking Lot and Grounds**
 - a. Build approx. 242 feet of sidewalk along north side of the parking lot to the east side of N Broadway St, either by moving the existing fence and constructing sidewalk, curb and gutter, or pedestrian space could be designated with bollards and paint
 - b. Replace bike parking with modern racks.
 - c. Move bus loading (except the Special Education Bus) to 8th St and use both lanes in front of the school to load students.
 - d. Build approx. 268 feet of sidewalk on the east side of N Broadway St north along the school's property.
 - e. Add a stop sign at the southbound secondary parking lot exit onto N Broadway St.
- 2 N Broadway Street**
 - a. Install a crosswalk and ADA-compliant curb ramps across N Broadway St connecting to the south corner of NW 10th Ave.
 - b. Add Neighborhood Greenway signs and pavement markings on N Broadway St from NE 6th Ave to NW 10th Ave and into the new subdivision.
- 3 8th Avenue**
 - a. Sign 8th Ave as a one-way street westbound.
- 4 NW 10th Avenue**
 - a. Construct approx. 118 feet of sidewalks on the south side of NW 10th Ave to fill the gap east of Eagle Creek Rd.
 - b. Install a crosswalk with ADA-compliant curb cuts and pedestrian-activated flashing beacons (RRFB) with from the south corner of NW 10th Ave across Eagle Creek Rd.
 - c. Install new stop sign pole at correct height at Eagle Creek Rd.
 - d. Trim bushes and trees obscuring signs and blocking sidewalk along the north and south sides of NW 10th Ave between SW Wade St and N Broadway St.
- 5 NE 6th Avenue**
 - a. Add a stop sign and flashing beacon at the east end of NE 6th Ave and N Broadway St and a stop sign at the west leg.
 - b. Stripe a crosswalk at the west leg of NE 6th Ave at NE Main St, reduce the curb radius and clarify access issues on the southwestern corner of NE 6th Ave and NE Main St.
 - c. Complete sidewalks along NE 6th Ave between N Broadway St and NW Wade St.
 - d. Add protected bike facilities from NW Wade St to NE Cemetery Rd.



Regional Updates



Thank you!